



CITRUS LANE

a SeaCountry Homes Community

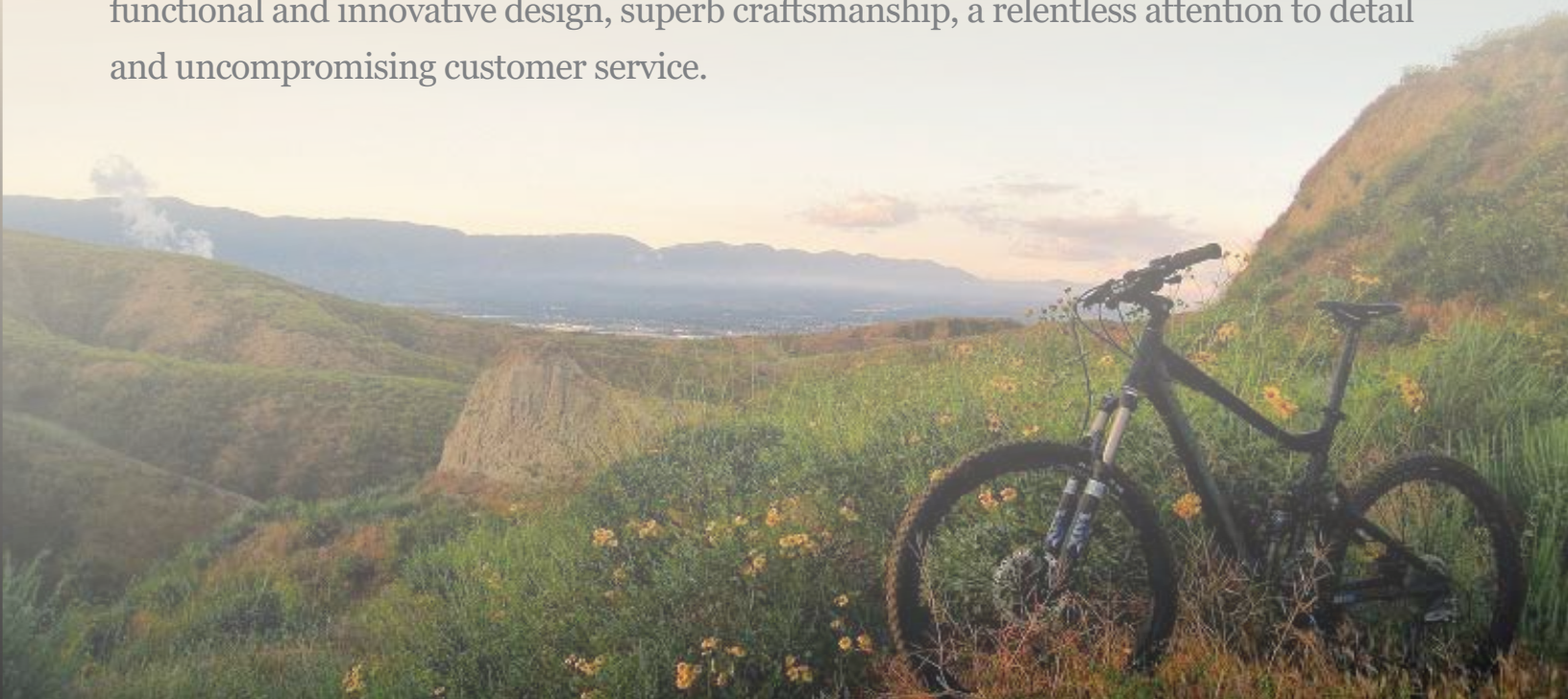
WELCOME TO THE GOOD LIFE

Imagine realizing your dream finally came true as you open the door to an elegant life amid the sunlit mountains of San Bernardino and San Jacinto adorning a lush valley rich in tradition, history and innovation.

Citrus Lane - an elegant enclave of 35 luxury residences by SeaCountry Homes. The finely appointed homes nestled between the cities of Loma Linda and Historic Redlands offers a thriving economy with abundant employment centers, major freeways access, award winning Redlands Unified School District, unparalleled medical services and a vibrant active lifestyle. The city of Loma Linda is internationally renown for advanced healthcare, and recipient of local and national honors of distinction for city-wide connectivity through fiber optic technology.

When Buck Bennett, President of SeaCountry Homes first saw the land, he envisioned a community with all the best ingredients for family living - thoughtfully smart floor plans with today's most sought after efficiencies. Architectural diversity and lush landscape that resonate with the history of the land, home interiors that touch all the senses, and a place you want to be every day has come to fruition. *You've arrived home!*

SeaCountry Homes is a privately held company with a stellar reputation for thoughtfully functional and innovative design, superb craftsmanship, a relentless attention to detail and uncompromising customer service.



RESIDENCE 1 - APPROX. 3,150 SQ.FT. Plus An Additional 306 Sq. Ft.* California Room

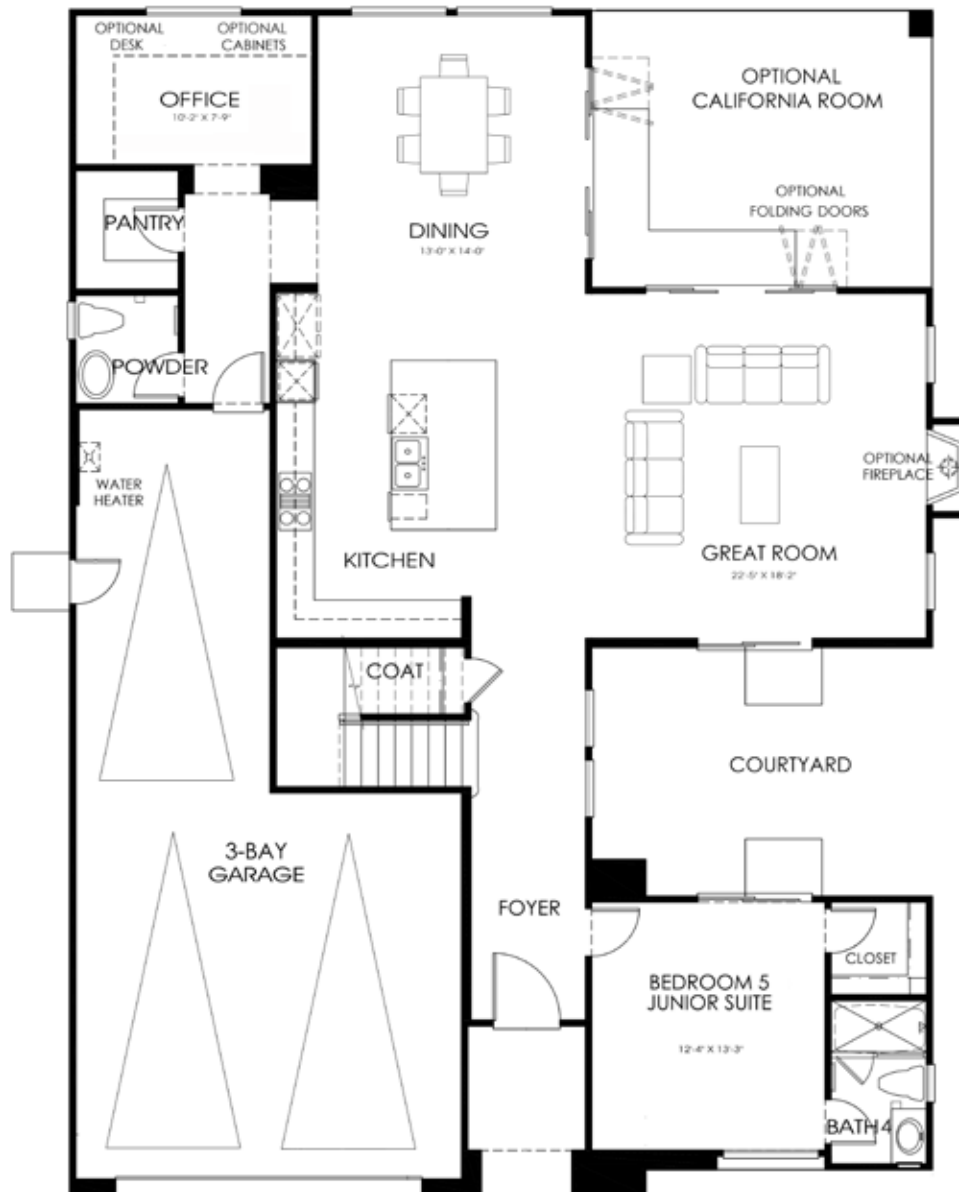
- 5 Bedrooms
- 4.5 Bathrooms
- 3-Bay Garage
- Gourmet Kitchen
- Granite Counter Tops
- Walk-In Pantry
- Downstairs Office
- Optional Bonus Room
- Luxurious Master Suite w/Large Walk-In Closet
- Downstairs Junior Suite
- Courtyard
- Spacious Laundry Room
- 9' and 10' Ceiling Height
- Energy Efficiency Throughout

Preliminary Spanish Exterior Style



*Exterior Living Footage for **Optional** California Room is Approximate

FIRST FLOOR - RESIDENCE 1



* Square Footage is Approximate. Floor Plans and Elevations are Preliminary and Subject to Change. SeaCountry Homes reserves the right at its sole discretion to make changes or modifications to prices, floor plans, features, specifications, exterior color schemes, policies, guidelines, dates, literature, maps, materials, homesites released and plans designated on each homesite without notice or obligation. Porches, windows, garages and courtyards (if available) may vary in size and configuration per plan. Models do not reflect racial preference. CAL DRE Broker, License No. 01344161. 1/17

Preliminary Santa Barbara Exterior Style



Preliminary California Ranch Exterior Style



SECOND FLOOR - RESIDENCE 1



RESIDENCE 2 - APPROX. 3,160 SQ.FT. Plus An Additional 285 Sq. Ft.* California Room

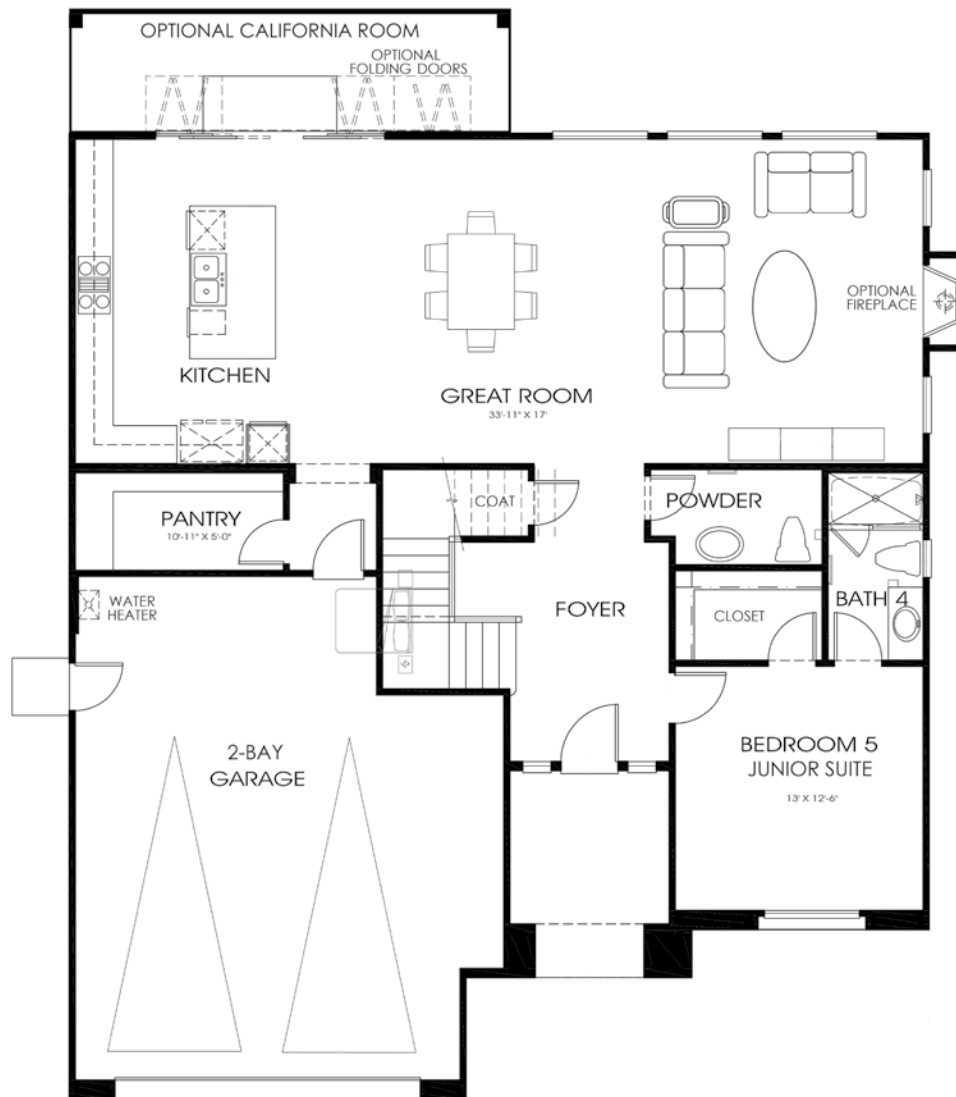
- Up to 5 Bedrooms
- 4.5 Bathrooms
- 2-Bay Garage
- Gourmet Kitchen
- Granite Counter Tops
- WalkIn Pantry
- Downstairs Office
- Downstairs Junior Suite
- Luxurious Master Suite w/Large Walk-In Closet
- Spacious Laundry Room
- Upstairs Loft
- Open Great Room
- 9' and 10' Ceiling Height
- Energy Efficiency Throughout

Preliminary Spanish Exterior Style



*Exterior Living Footage for **Optional** California Room is Approximate

FIRST FLOOR - RESIDENCE 2



* Square Footage is Approximate. Floor Plans and Elevations are Preliminary and Subject to Change. SeaCountry Homes reserves the right at its sole discretion to make changes or modifications to prices, floor plans, features, specifications, exterior color schemes, policies, guidelines, dates, literature, maps, materials, homesites released and plans designated on each homesite without notice or obligation. Porches, windows, garages and courtyards (if available) may vary in size and configuration per plan. Models do not reflect racial preference. CAL DRE Broker, License No. 01344161. 1/17

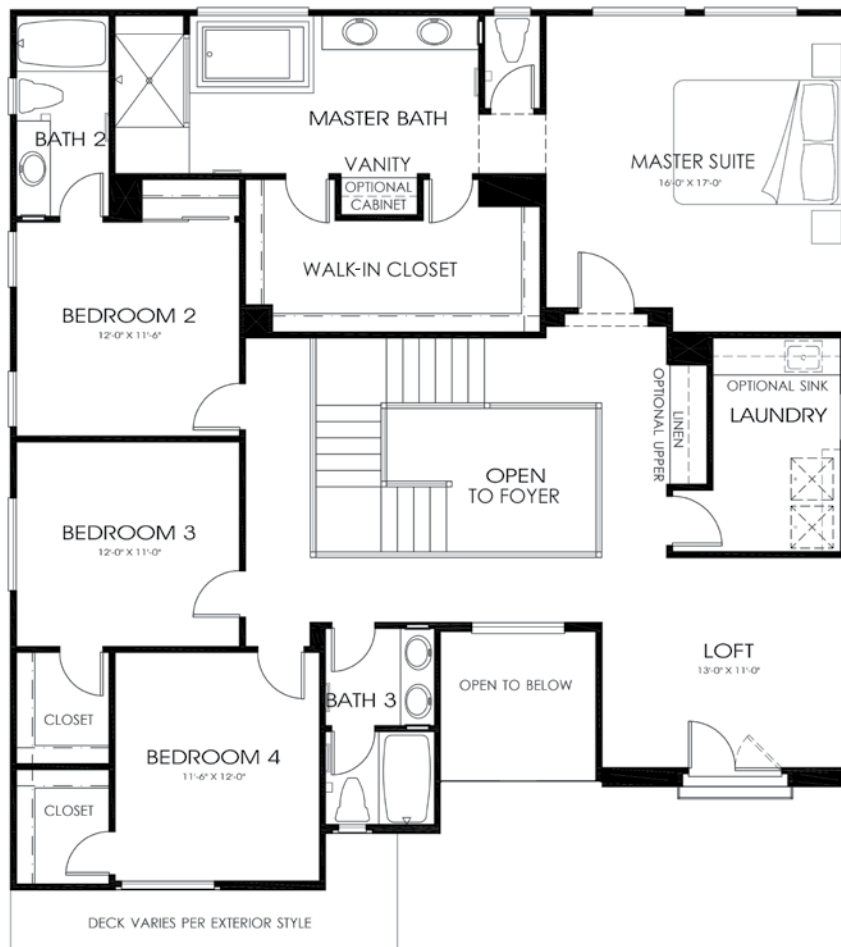
Preliminary Santa Barbara Exterior Style



Preliminary California Ranch Exterior Style



SECOND FLOOR - RESIDENCE 2



RESIDENCE 3 - APPROX. 3,320 SQ.FT. Plus An Additional 375 Sq. Ft.* California Room

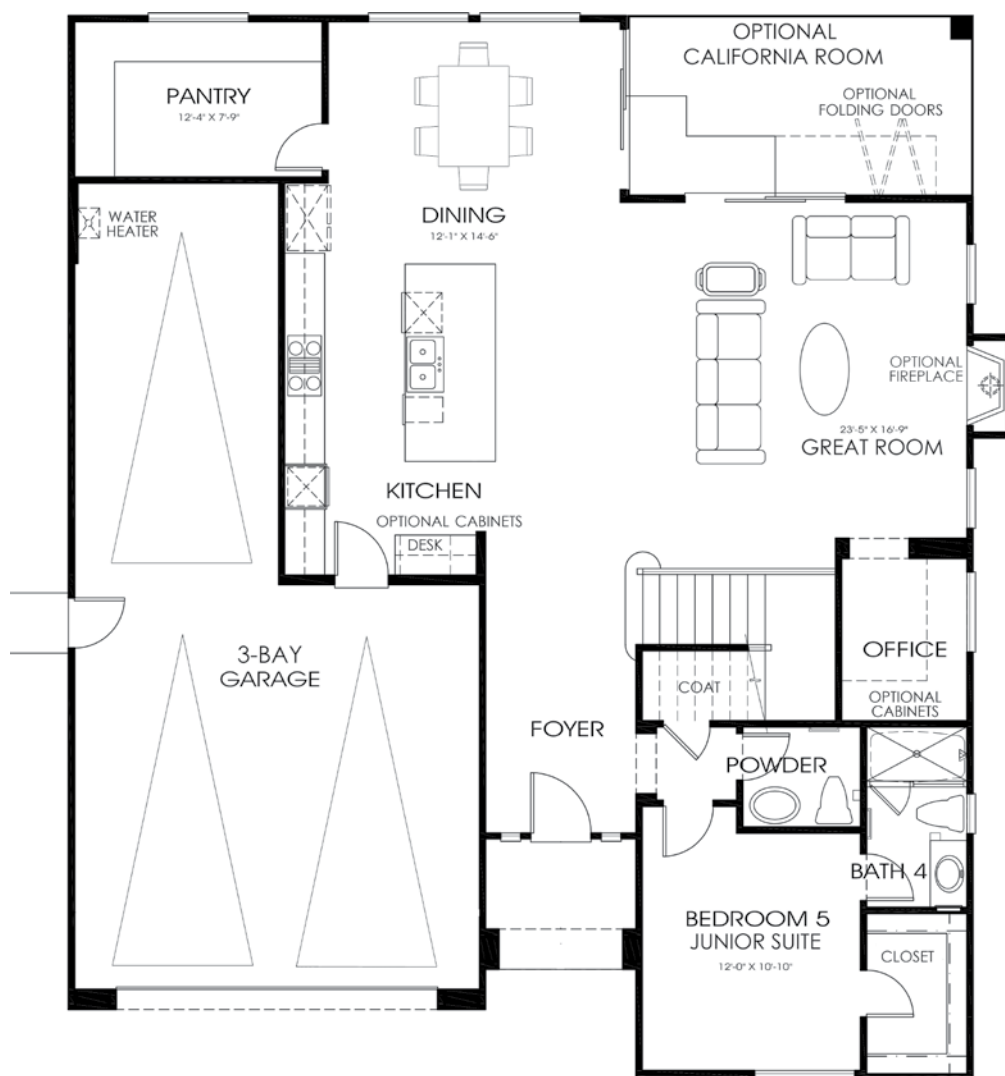
- 5 Bedrooms
- 4.5 Bathrooms
- 3-Bay Garage
- Gourmet Kitchen
- Granite Counter Tops
- Large Walk-In Pantry
- Downstairs Office
- Downstairs Junior Suite
- Luxurious Master Suite
- Spacious Walk-In Closet
- Large Laundry Room
- Upstairs Den or Office
- Open Great Room
- 9' and 10' Ceiling Height
- Energy Efficiency Throughout

Preliminary Spanish Exterior Style



*Exterior Living Footage for **Optional** California Room is Approximate

FIRST FLOOR - RESIDENCE 3



* Square Footage is Approximate. Floor Plans and Elevations are Preliminary and Subject to Change. SeaCountry Homes reserves the right at its sole discretion to make changes or modifications to prices, floor plans, features, specifications, exterior color schemes, policies, guidelines, dates, literature, maps, materials, homesites released and plans designated on each homesite without notice or obligation. Porches, windows, garages and courtyards (if available) may vary in size and configuration per plan. Models do not reflect racial preference. CAL DRE Broker, License No. 01344161. 1/17

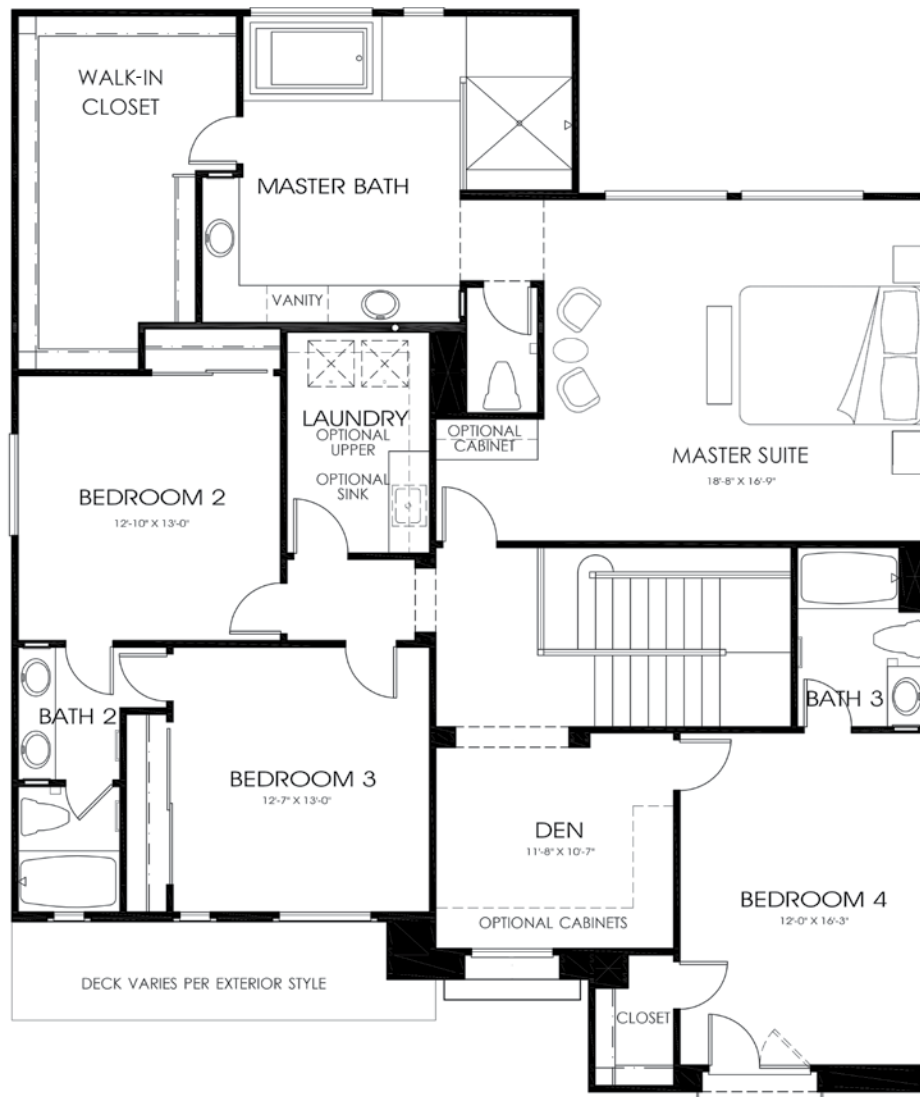
Preliminary Santa Barbara Exterior Style



Preliminary California Ranch Exterior Style



SECOND FLOOR - RESIDENCE 3



You've Arrived Home

A stunning collection of homes with spacious open floor plans that feature rooms, flexible spaces, large gourmet kitchens; and optional features and upgrades, such as California Rooms that are ideal for indoor and outdoor entertaining. Extravagant master suite retreats showcase spa-inspired baths with large walk-in closets, and a downstairs junior suite with bath is included in every plan.

Architectural Details

- Spanish, Santa Barbara and California Ranch Architecture
- Concrete Tile Roofs
- Brick and Stone Veneer Accented Exterior Styles (Vary Per Plan)
- Handsome Front Entry Doors
- Insulated Roll-up Ranch Style Garage Doors with 2 Remote Controls
- Rain Gutters

Interior Details

- Ceramic Tile Entry
- Vinyl at Kitchens, Baths and Laundry
- Beautiful Carpeting with Upgraded Pad
- Bullnose Drywall Corners
- Powder Baths with Pedestal Sink and Delta Polished Chrome Fixtures
- Pre-Wired Low Voltage Wiring and Fiber Optic Packages
- Separate Interior Laundry Room with Shelf and Base Cabinets for Storage
- Craftsman Style Stair Systems
- Lever Style Interior Door Hardware

Extravagant Master Suites

- Luxuriously Open Suites
- Spacious Walk-In Closets
- Private Bath with Dual Sinks, Garden Tub and Separate Walk-in Shower
- Attractive Polished Chrome Delta Faucets
- Beautiful Solid Surface Counters with Undermount Sinks
- Ceramic Tile Walls Surface at Showers and at Master Bath Tub Deck
- Compartmentalized Water Closet with Elongated Toilets

Exquisite Kitchens

- Granite Slab Counter Tops with Full Backsplash at Cooktop
- Elegant White Thermofoil Cabinets with Concealed Hinges
- Recycling Center
- Whirlpool Stainless Steel Appliances including 36" 5-burner Gas Cooktop, Oven, Hood, Microwave and Dishwasher
- Large Gourmet Kitchen Islands
- Stainless Steel Double Bowl Sink with Chrome Pull Out Faucet in Island
- USB Charging Station
- Refrigerator Space Pre-Plumbed with Water Line for Ice and Water

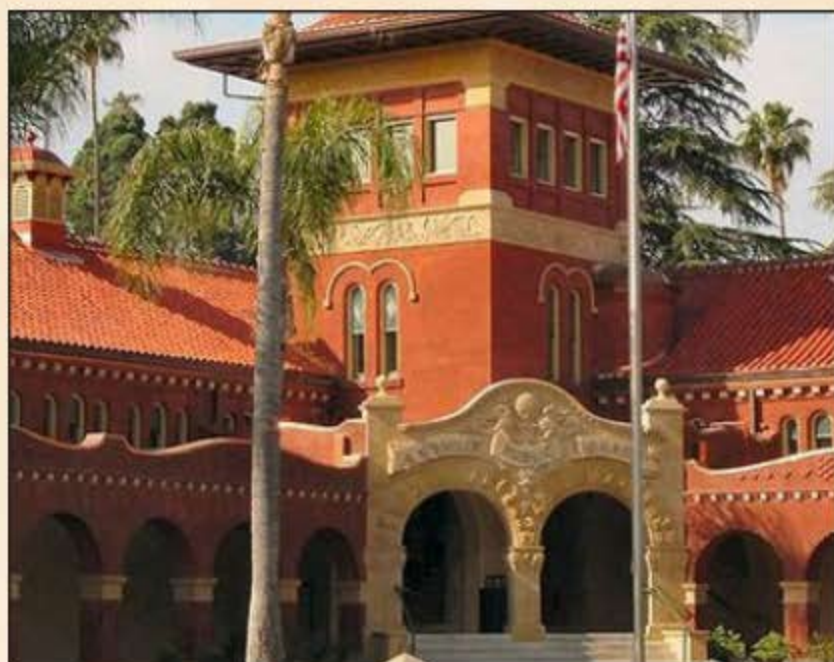
Energy Efficient Details

- Energy Efficient Details
- High Efficiency Air Conditioning
- High Efficiency Gas Furnace
- Tankless Water Heater
- Energy Efficient Lighting Throughout
- Dual Glazed, High Efficiency Vinyl Low- E Windows
- Interior Fire Sprinkler System
- Water Friendly Front Yard Landscaping

Neighborhood Benefits

- No Mello Roos
- Low Home Owner Association Dues
- Loma Linda is a Fiber Optic City
- Within Redlands Unified School District
- Close to Transportation Corridors
- Minutes from Shopping, Major Medical Centers, Employment Centers, Dining, Entertainment, Cultural and Recreational Opportunities







SEACOUNTRY HOMES

Citrus Lane

Corner of California Street & Citrus Avenue

10921 Golden Rod Road

Loma Linda, CA 92354

909.644.0137

www.SeaCountryHomes.com

PRELIMINARY



In a continuous effort to improve product, SeaCountry Homes reserves the right to change floor plans, exterior elevations, square footage, materials and pricing without prior notice. Window locations, sizes and styles, ceiling heights, entry and room dimensions vary per plan and exterior elevation. All square footages are approximate. All illustrations are artist's concept only. Furthermore, the availability of certain options is subject to construction status and schedule. Optional features may be predetermined and included at additional cost on select home sites. Sales by SeaCountry Homes, CA Bureau of Real Estate License No. 01344161. SeaCountry Homes encourages and supports the affirmative advertising and marketing program in which there are no barriers to obtaining housing because of race, color, religion, sex, handicap, familial status or national origin. Models do not reflect racial preference. See Sales Counselor with any questions or for further details. 1/17